

# Skeleton Consultants Pvt. Ltd



## Fast Facts:

Name of Project: Golden Leaf Hotels

Owner: Mr. Prem Goyal

Architects: Design Buro Architects - Indore

Structural Consultants: Skeleton Consultants Pvt. Ltd. – Indore/Noida

Constructed area: Approximately 17000 sqm

Steel Structure Supplier: M/s KIRBY Building systems India

Total steel tonnage: approx. 1000MT

## Project Brief:

The project was assigned to Design Buro Architects and was led by Architect Navendu Shrivastav. Client wanted to build a Hotel facility which is

also suitable for use for wedding ceremonies and other such events. Accordingly, Architects came out with a unique idea in which the series of rooms at various stories were placed in such a way that a big hall was automatically created in addition to giving a beautiful aesthetic look to the building.

This unique shape of building was giving an advantage in terms of its behavior to resist horizontal loads, in one direction. Full benefit of this was taken by the design team of Skeleton Consultants Pvt. Ltd and a very efficient structure is evolved. Horizontal loads in one direction were transmitted to RCC foundations primarily in the form of

axial forces in members. In other direction it was decided to design front office block and rear utility block as stiff blocks to carry horizontal loads.

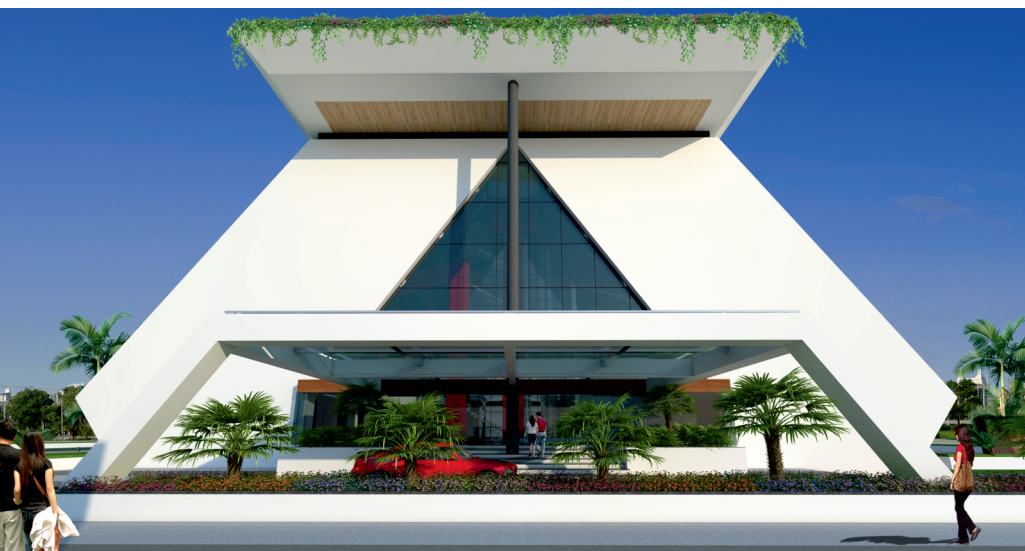
The shape of building was posing another problem of construction difficulty. After discussions with architects it was agreed to go ahead with steel structure combined with RCC construction for foundations and for front and rear rigid blocks.

The shape of building was posing another problem of construction difficulty. After discussions with architects it was agreed to go ahead with steel structure combined with RCC construction for foundations and for front and rear rigid blocks.

Kirby Building Systems agreed to fabricate and erect the building according to the designs given by Skeleton Consultants. Design of connections in steel elements was another issue as connections were hindering with dry wall systems proposed by architects. The difficulty was sorted out jointly by Architects, Structural consultants and builders.

Black Cotton Soil was encountered up to a depth of 3.0m hence foundations were taken below it. Construction of foundation itself took about three months and the buildingshell was completed in one year period.

**WORKING TEAM:** Er. Manish Bundela, Er. Arun Sodhani, Er. Jayesh Jain & Ar. Navendu Shrivastav  
INDORE



## Contact:

**Skeleton Consultants Pvt. Ltd**

412, Satguru Parinay, Opp. C-21 Mall,  
Near Pakiza Retail, INDORE-452010  
India.

Tel:+91-731-2551267

Email: [skeletonindore@skeleton.in](mailto:skeletonindore@skeleton.in)